

MORSØ

Mitring Machine EHXL



Quality, service, and experience since 1911

Clean Cut



MORSØ-EHXL

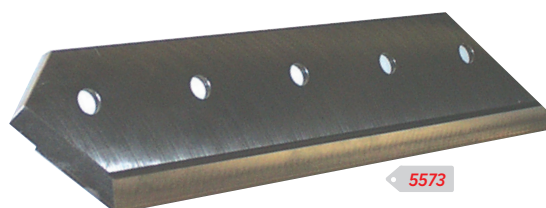
A fully automatic electric/hydraulic mitring machine

MORSØ-EHXL is a fully automatic, electric/ hydraulic mitring machine with a two-hand release built on. This makes the machine absolutely safe as it is impossible to operate the machine and touch the knives at the same time.

With MORSØ-EHXL you achieve the clean smooth cut by automatically cutting off the section in two cuts, as long as both push buttons are activated at the same time. The cutting time varies from 1 second and up, depending of the thickness of the work pieces. Having finished the cutting the knife block automatically returns to the starting position. The starting position (horizontal movement) is adjusted according to the width of the moulding, and MORSØ-EHXL will automatically cut the work piece bit by bit. The vertical movement of the knife block is also adjustable with three different heights. Pos. 1 for small work pieces, pos. 2 for medium size work pieces and pos. 3 for very thick work pieces.

The MORSØ EHXL is excellent for repetition works, as:

- it is as fast as a double mitre saw
- the cutting waste drops into a waste chute
- the working procedure creates no dust
- the noise level is below 70dB.
- needs no compressor



Uses massive five bolt blades

The MORSØ-EHXL is delivered with:

Two-hand release operation, safety guard, sliding longitudinal stop, second stop, waste chute, extension table for the left side, DeLuxe measuring scale up to 100", supporting legs, fence, adjustable and automatic rebate supports and clamping cylinders.

The MORSØ-EHXL is available with three phase motor, voltage to your requirements. Single phase motor can be supplied on inquiry.

Technical data for Morsø-EHXL	
Double Mitre	45°
Cutting width max.	150 mm (6")
Cutting height max	250 mm (10")
DeLuxe measuring scale up to	2,500 mm (100")
Motor three phase	1.5 kW - 3.3 Amps
Pumping capacity	11.2 litres/min. (3 gal./min.)
Working pressure	80 bar
Power transmission	660 kilos (1,455 lbs)
Tank contents	8 litres (2 gal.)
Net Weight	278 kilos (614 lbs)

Now three different models of the electric/hydraulic machine:

- MORSØ-EH 3415
- MORSØ-EHT 4866
- MORSØ EHXL 5541

(all models can be equipped with Digital Control System)

See PUB020

For information and prices on the comprehensive Lion range of Morso mitre guillotines, blades, accessories, spare parts and blade sharpening, see Lion website or the current Lion Trade catalogue.

LION Picture Framing Supplies Ltd

148 Garrison Street, Birmingham B9 4BN

Tel: 0121 773 1230 Fax: 0121 771 2540

Open 9 - 5 Monday to Friday

www.lionpic.co.uk

info@lionpic.co.uk

Any prices quoted are correct as at April 2018. Please check before ordering.

